

Application of JPEG 2000 Wavelet Compression to Multibeam Echosounder Mid-water Acoustic Reflectivity Measurements

J. Beaudoin

Ocean Mapping Group

University of New Brunswick

Fredericton, NB

Now at

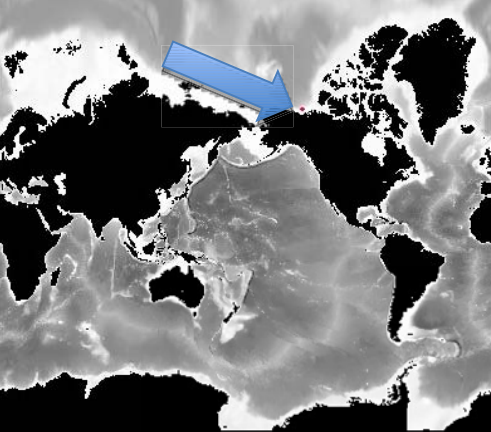
Center for Coastal and Ocean Mapping

University of New Hampshire

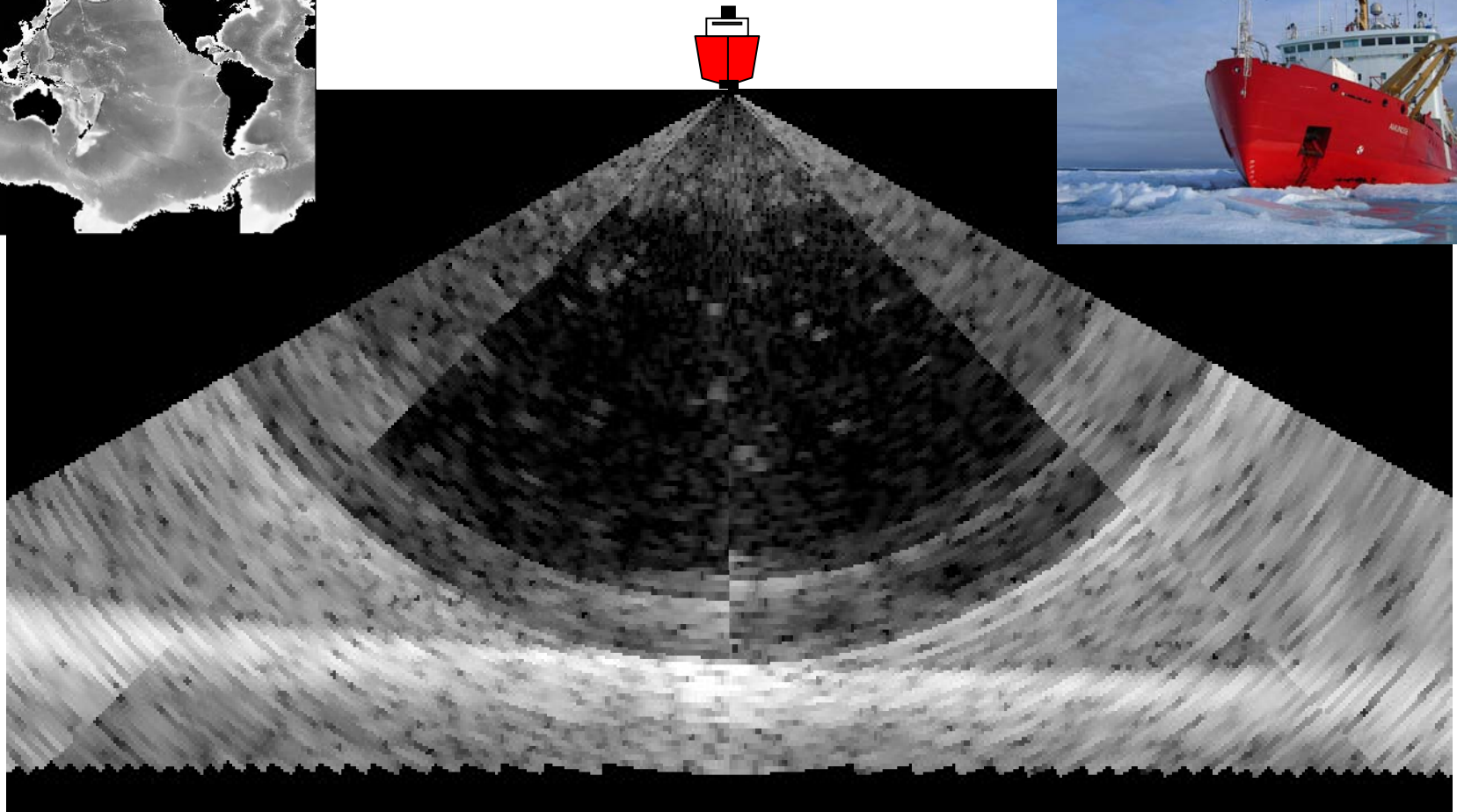
Durham, NH

Ocean Mapping Group





120 m



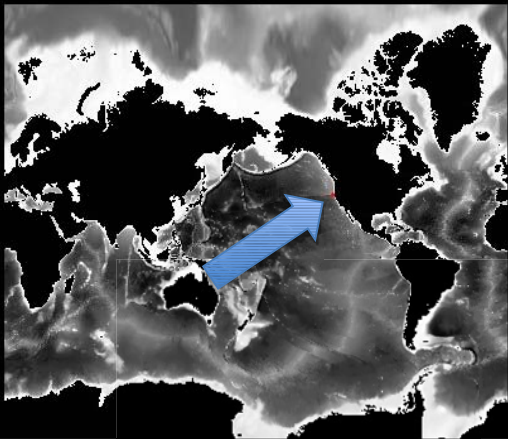
240 m

CCGS Amundsen – Mackenzie Shelf, 2009-10-01
EM302 30 kHz MBES (1.0°x2.0°)

Ocean Mapping Group

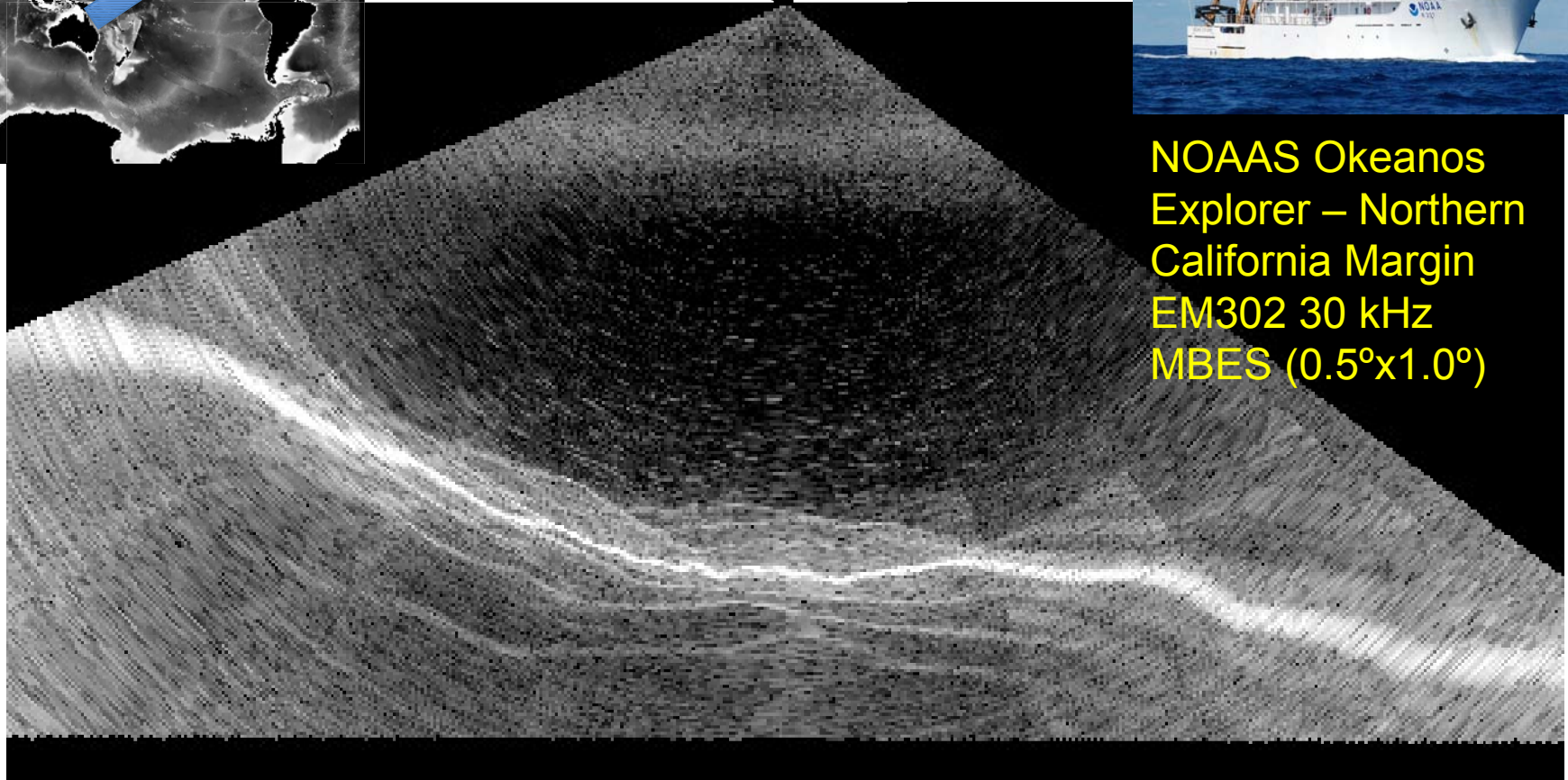
University of New Brunswick
CANADA





NOAAS Okeanos
Explorer – Northern
California Margin
EM302 30 kHz
MBES (0.5°x1.0°)

2,500 m

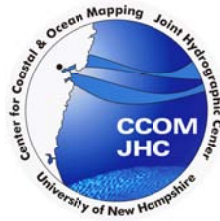


5,000 m

Ocean Mapping Group



J. V. Gardner, M. Malik, and S. Walker. Plume 1400 Meters High Discovered at the Seafloor off the Northern California Margin. Eos Trans. AGU, 90(32), 2009



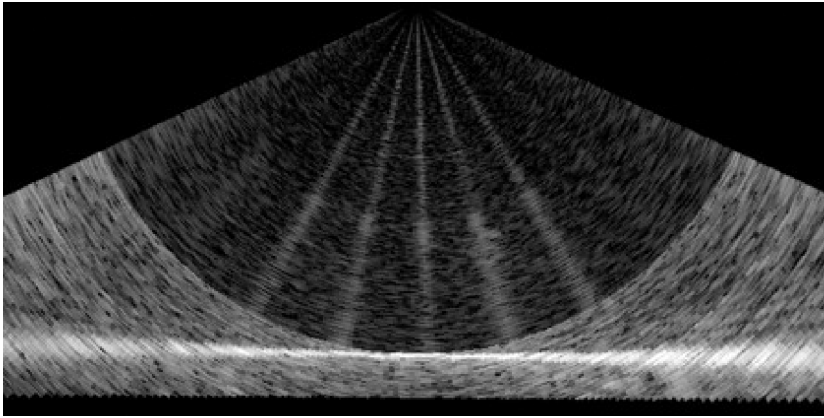


Data Storage Requirements



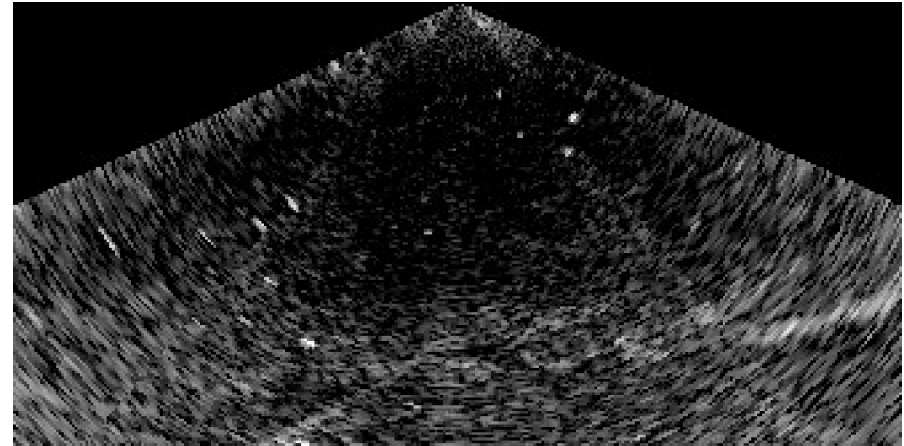
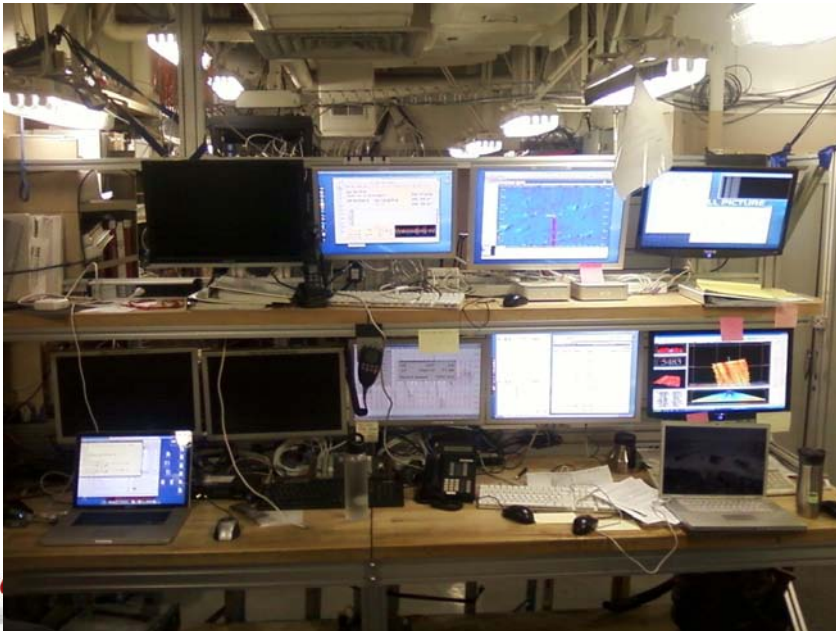
- Logging WC data increases file sizes:
 - CCGS Amundsen, 2009 field season
 - 135 days at sea, continuous MBES logging
 - “Regular” data: 860 GB (.all files)
 - Water column data: 783 GB (.wcd files)
- File size grows by factor of 2-8, depending on water depth and angular sector
- Some (most?) don’t bother logging WC, especially in shallow water





Recording “Interesting” Data only

How do you define “interesting”?



Oce



Solution?

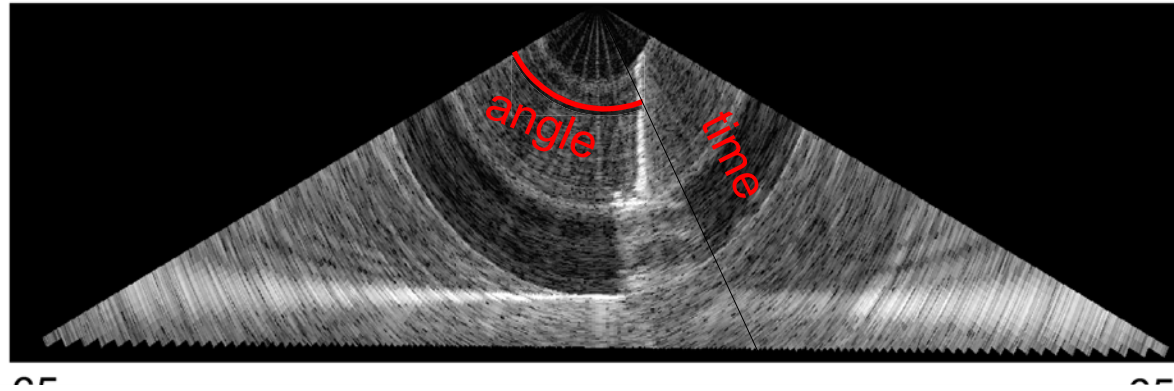
- Courtney (2008) applied JPEG2000 to seismic & sidescan and suggested use for MBES
- JPEG2000:
 - Discrete Wavelet Transform (DWT)
 - Lossless and Lossy methods available
- JasPer implementation of JPEG2000
 - Freely available open source library
 - Reasonably documented
 - Implemented in many open source applications

R. Courtney. Storage and dissemination of SEG Y data in JPEG2000 format. In Proc. Shallow Survey 2008, Oct2008.

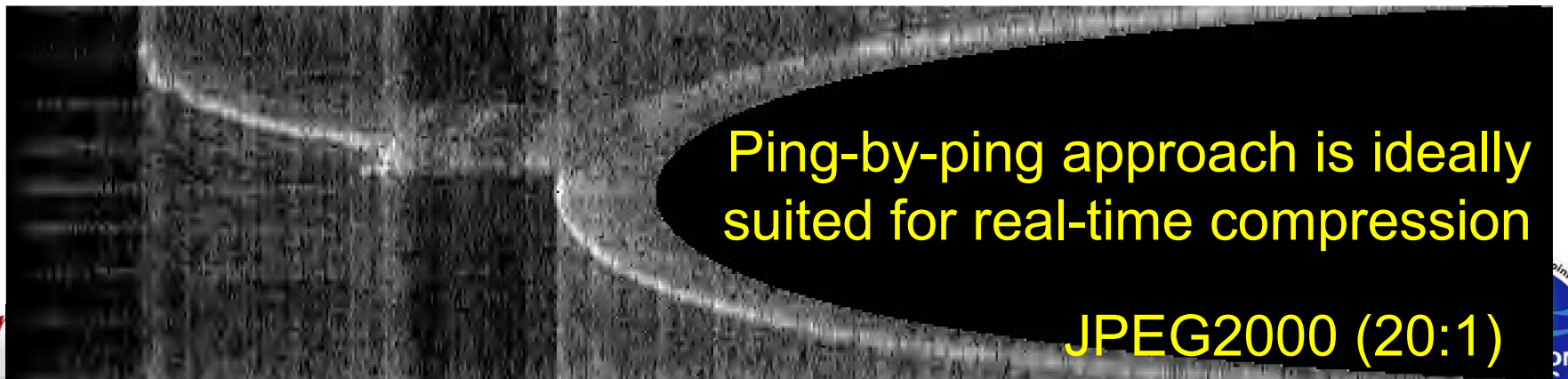
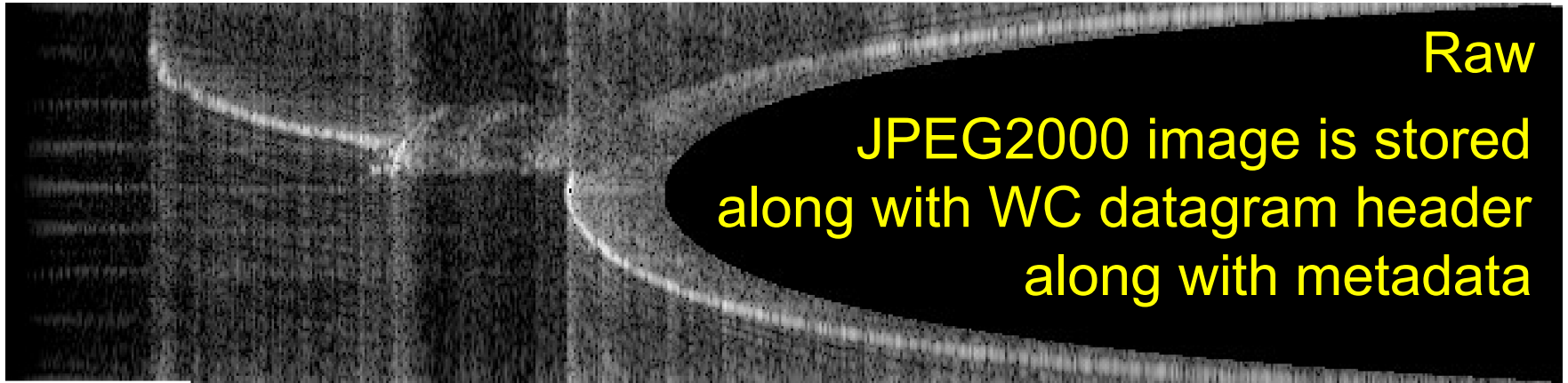


Implementation

time



Beam/angle

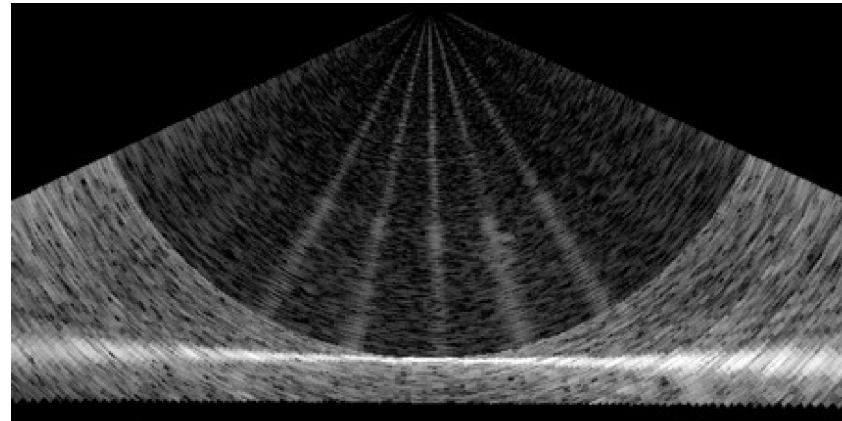
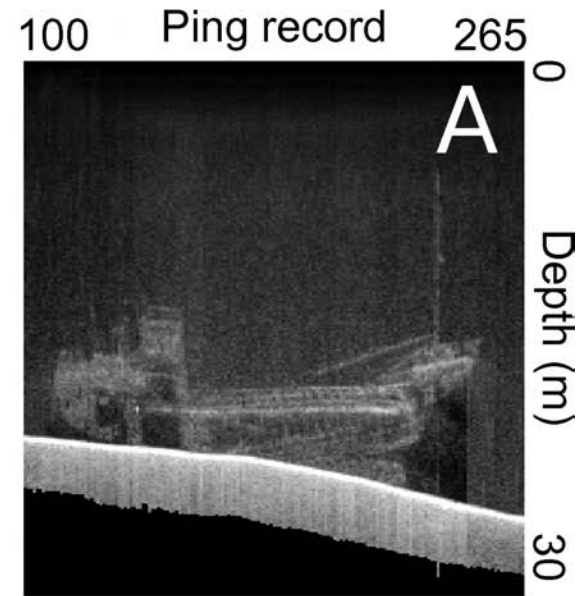


Ocean



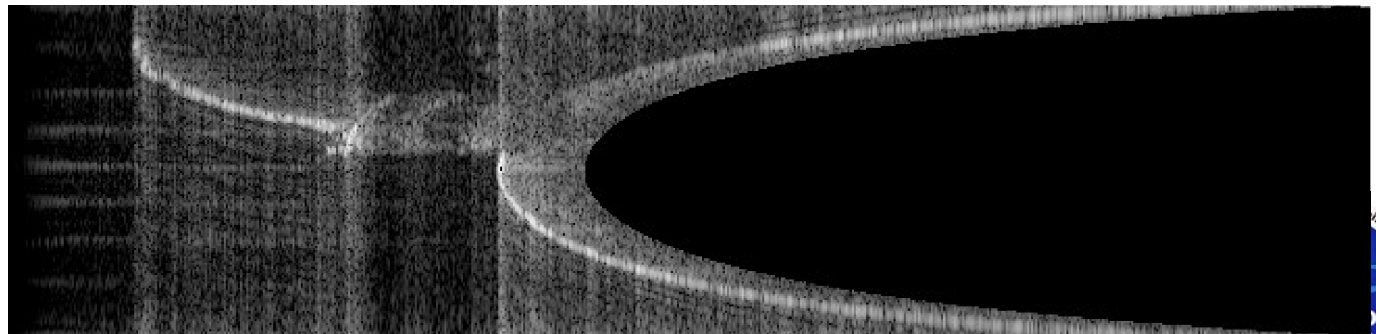
Evaluation

- MV G.B. Church, purposely sunk in 1991
- Mapped with EM3002 in 2006 (CCGS Otter Bay)
- 12 passes, only 1 pass fully imaged mast (1,064MB of data, 899MB of WC)
- Wreck imaged over 170 pings

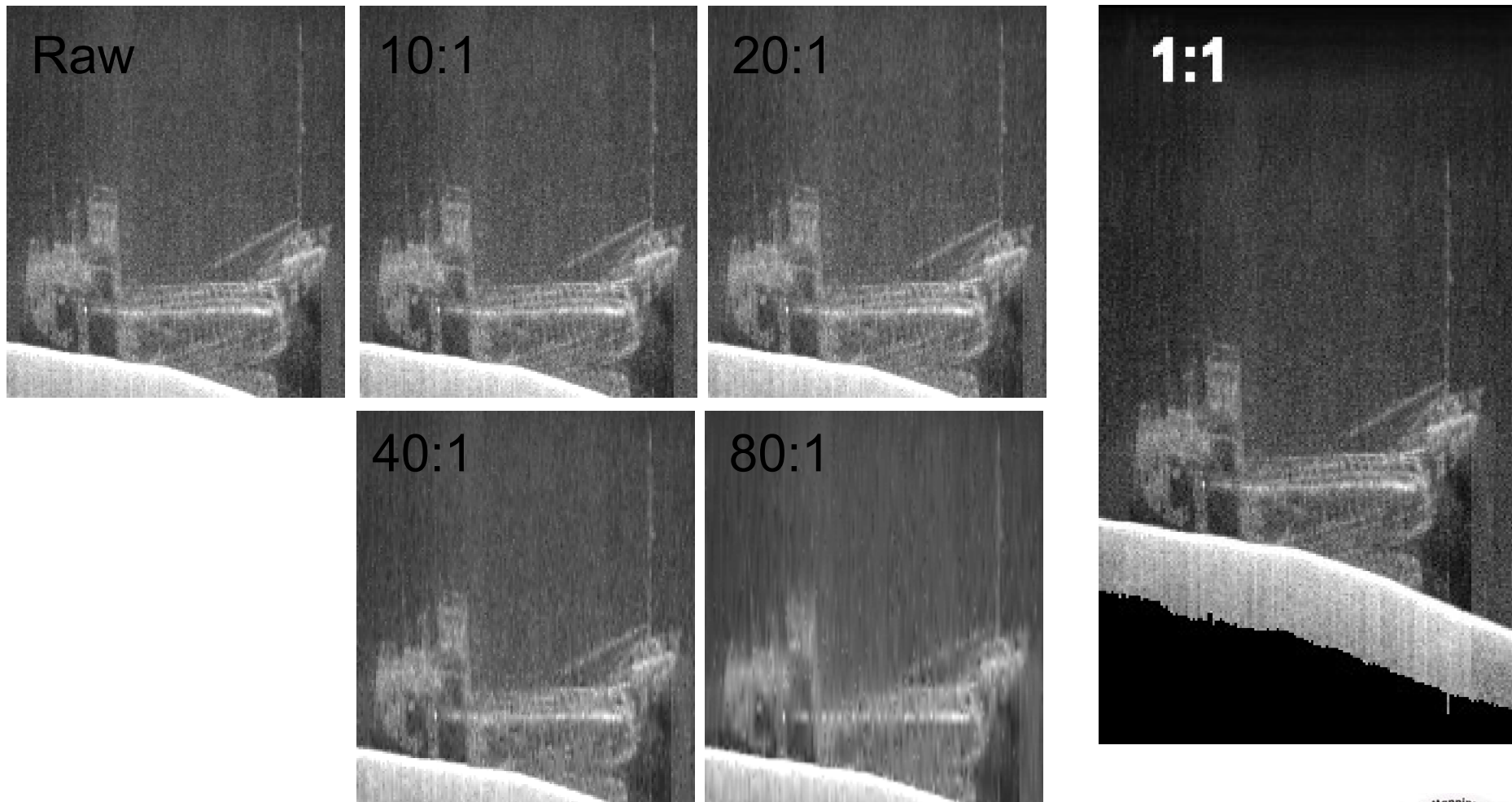


Results: Lossless Compression

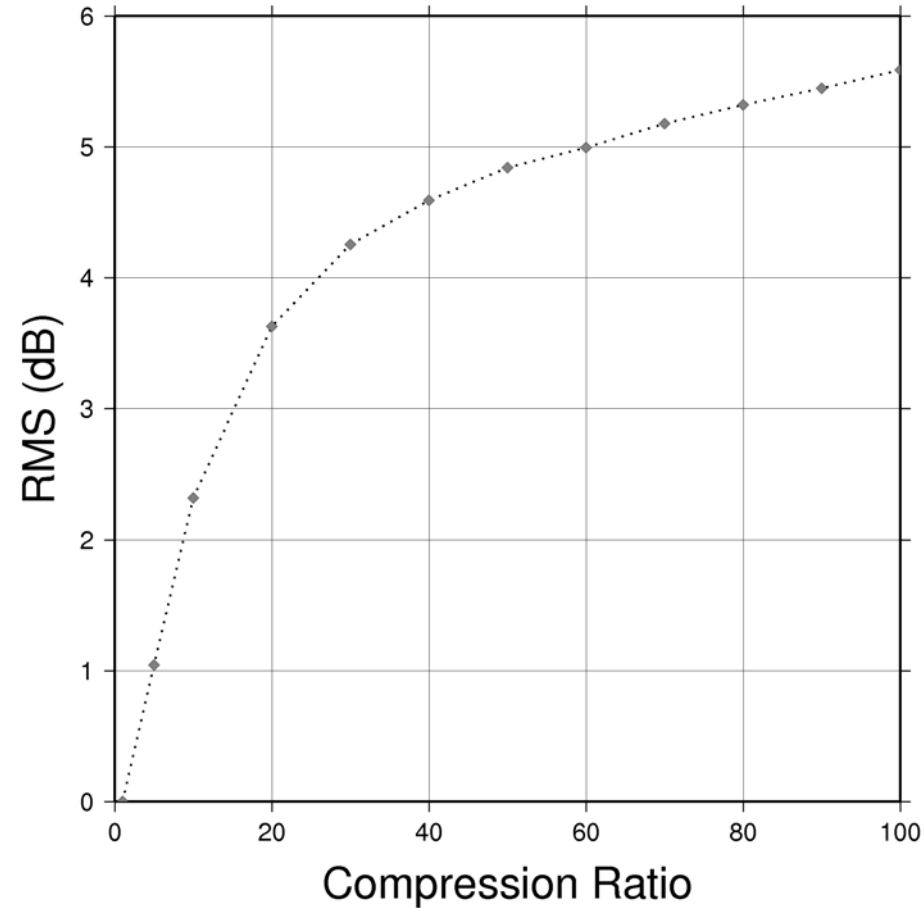
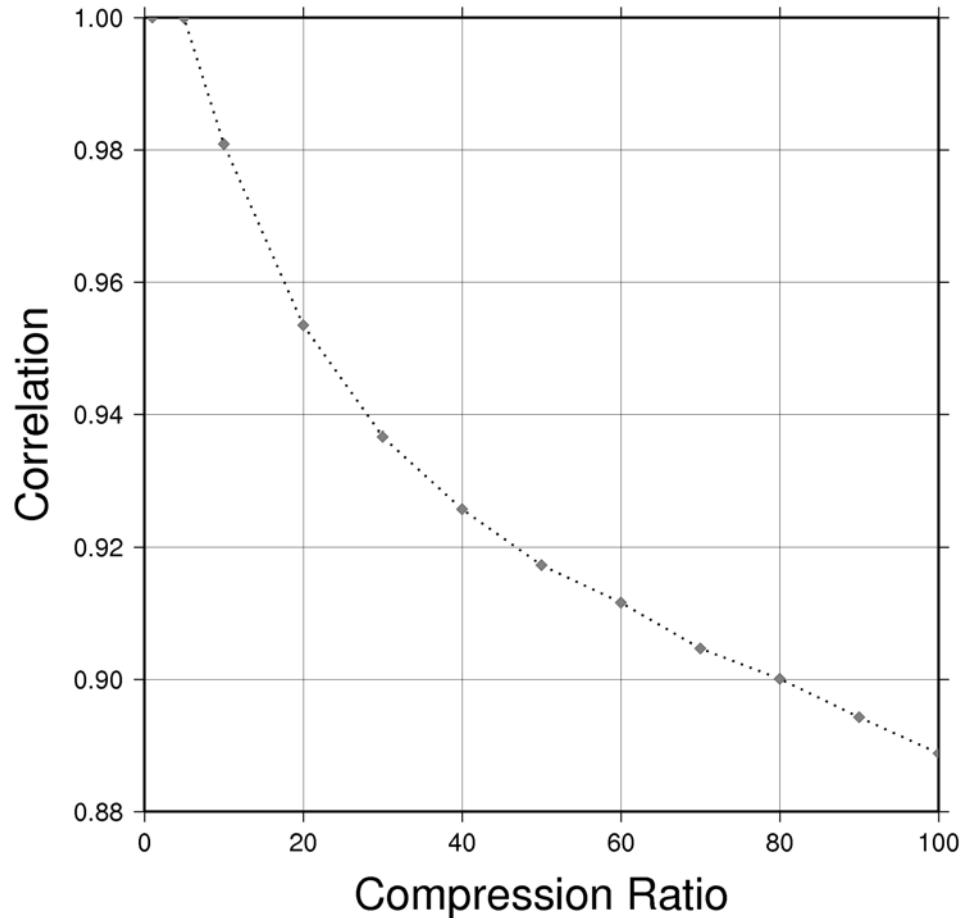
- Ratios 2.5:1 (raw image compared to JPEG2000)
- Effective ratio only 1.5:1 due to zero padding
- Still better than WinZip:
 - JPEG2000: packs down file size to 68%
 - Lempel-Ziv: packs down file size to 75%



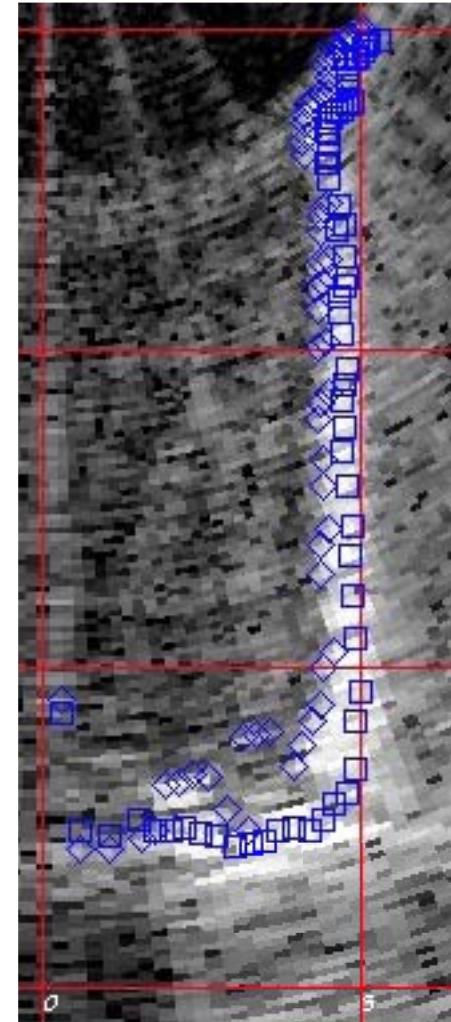
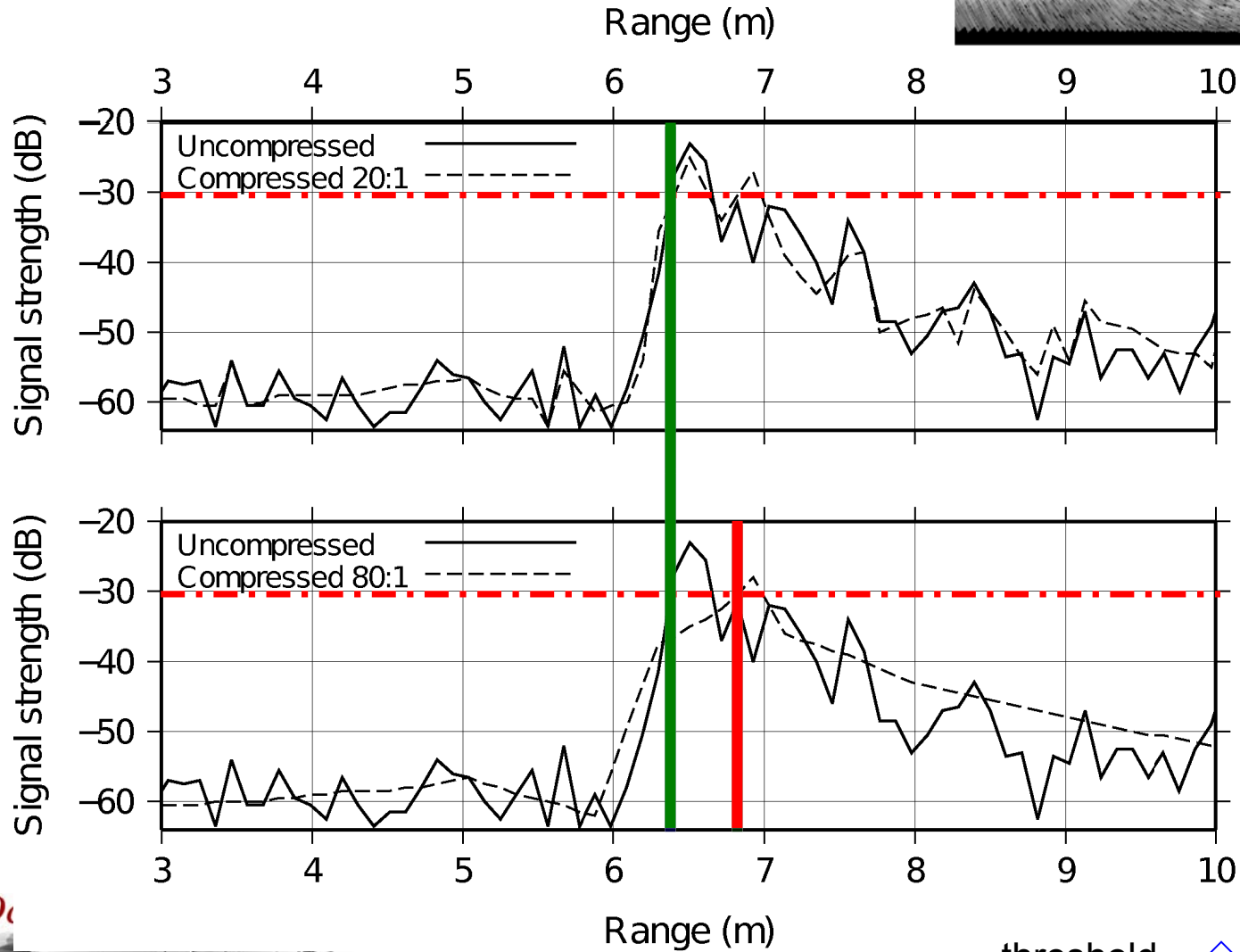
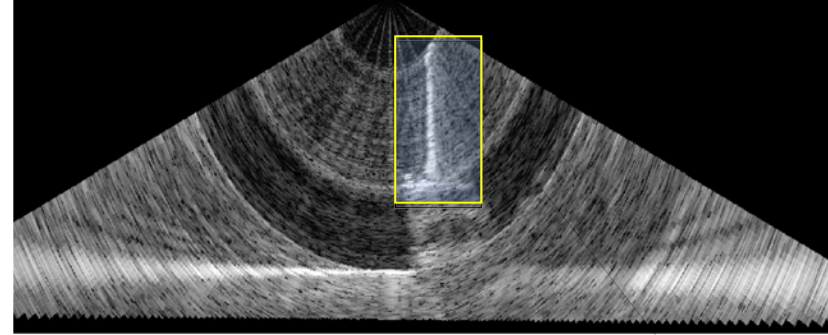
Results: Lossy Compression



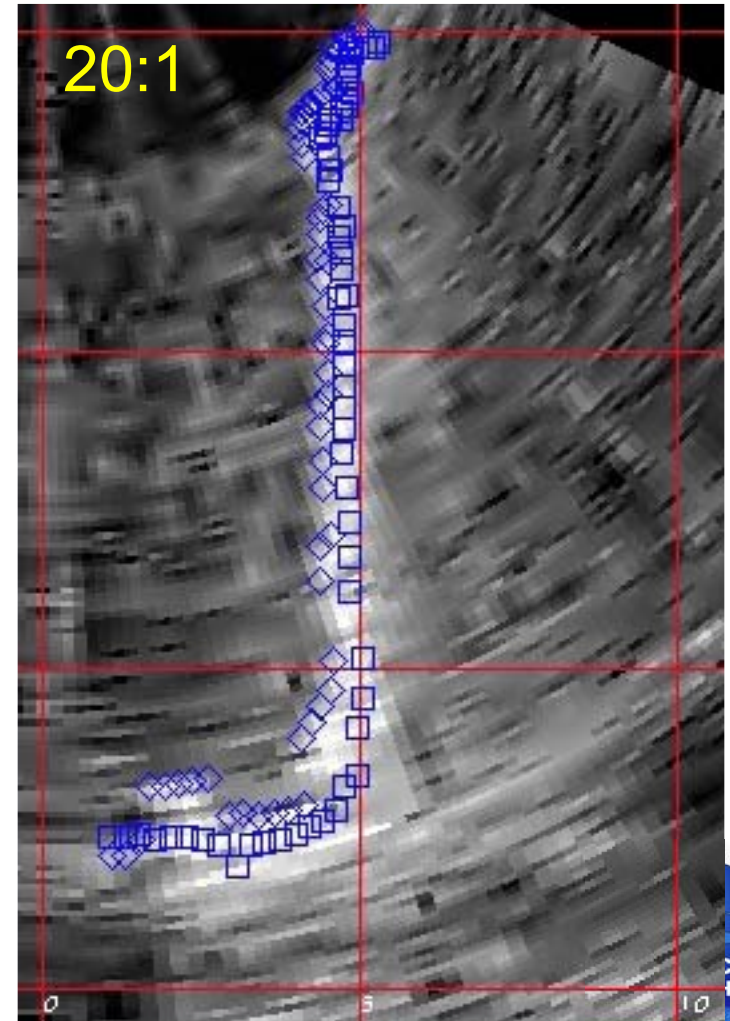
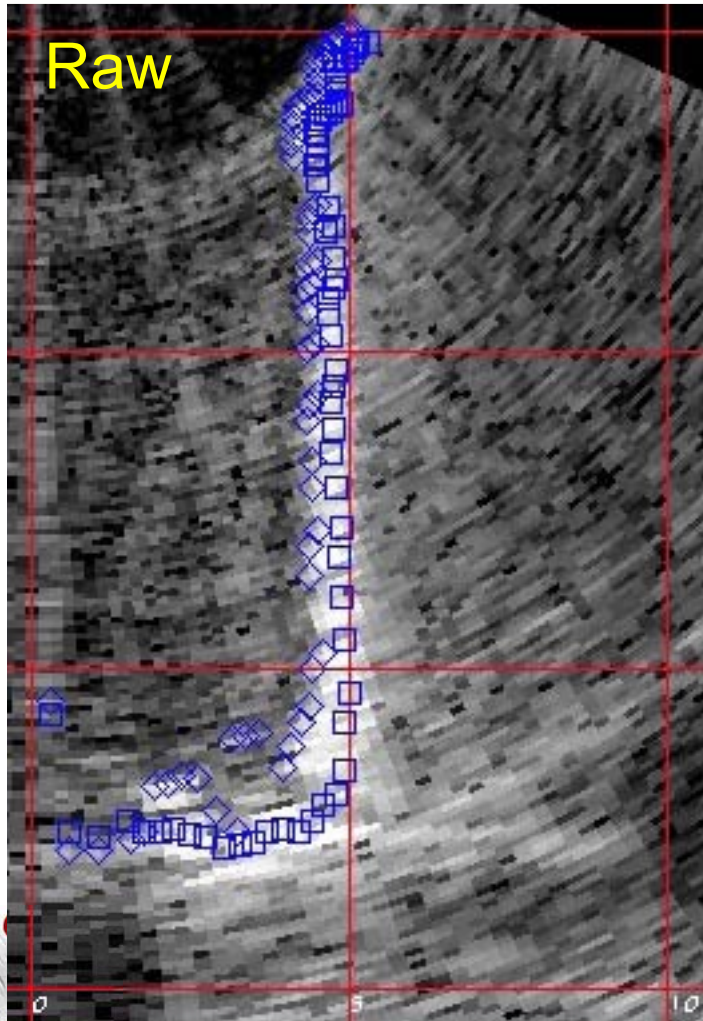
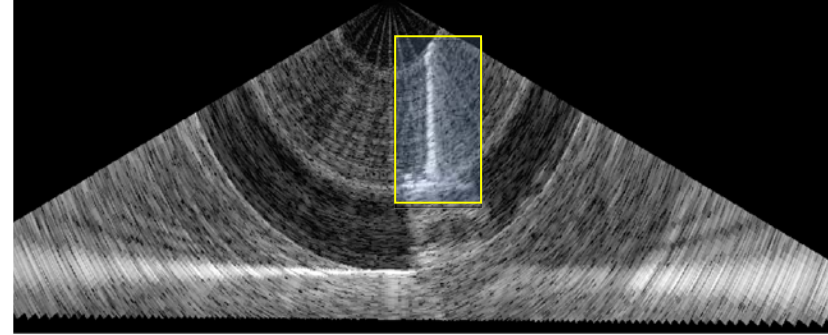
Quantifying Effects of Lossy Compression



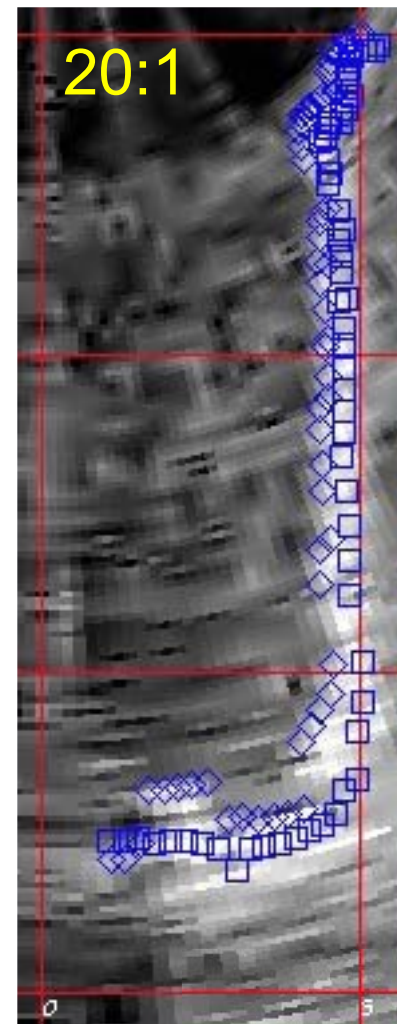
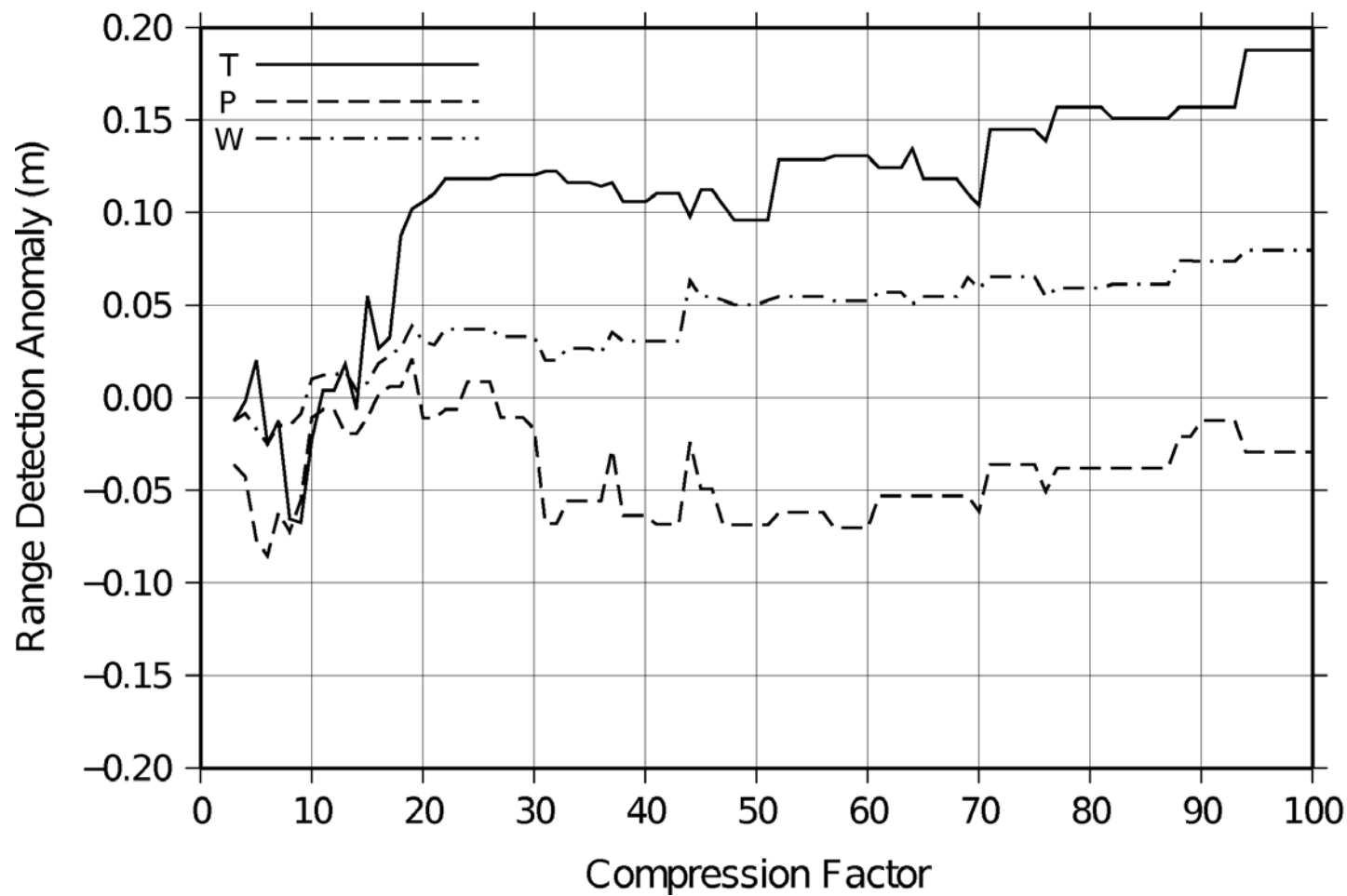
Wreck Measurement



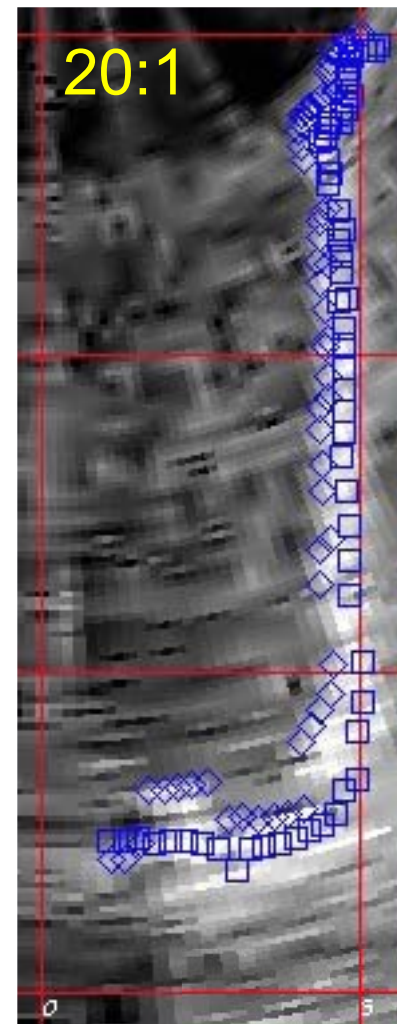
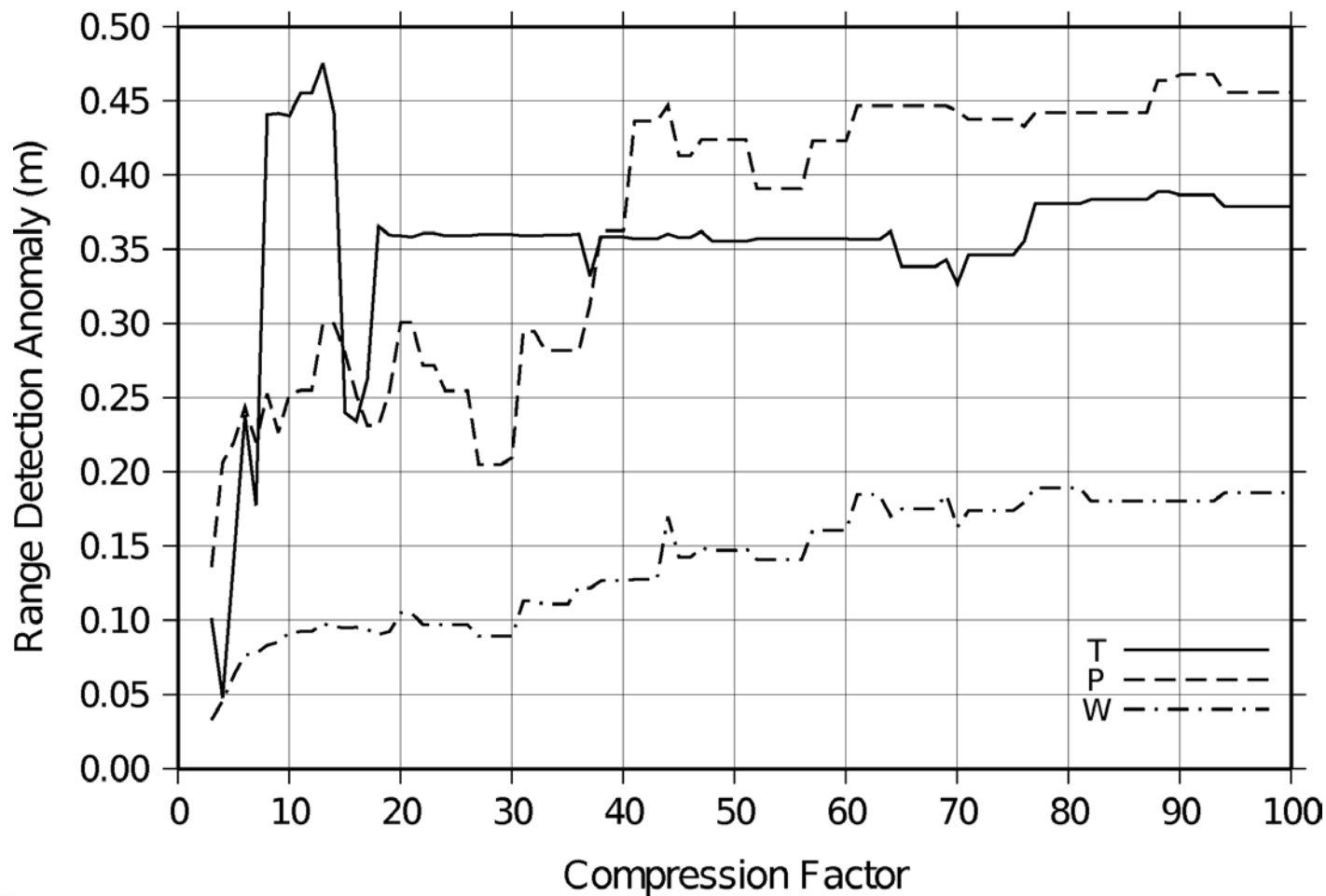
Wreck Measurement



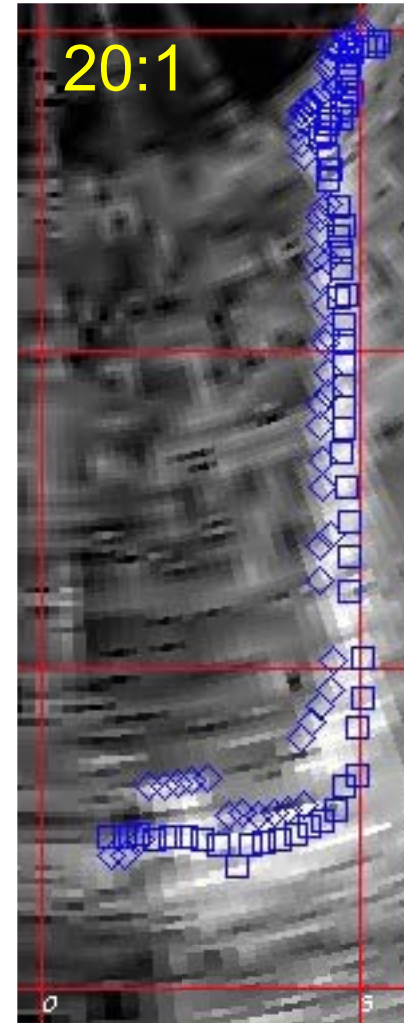
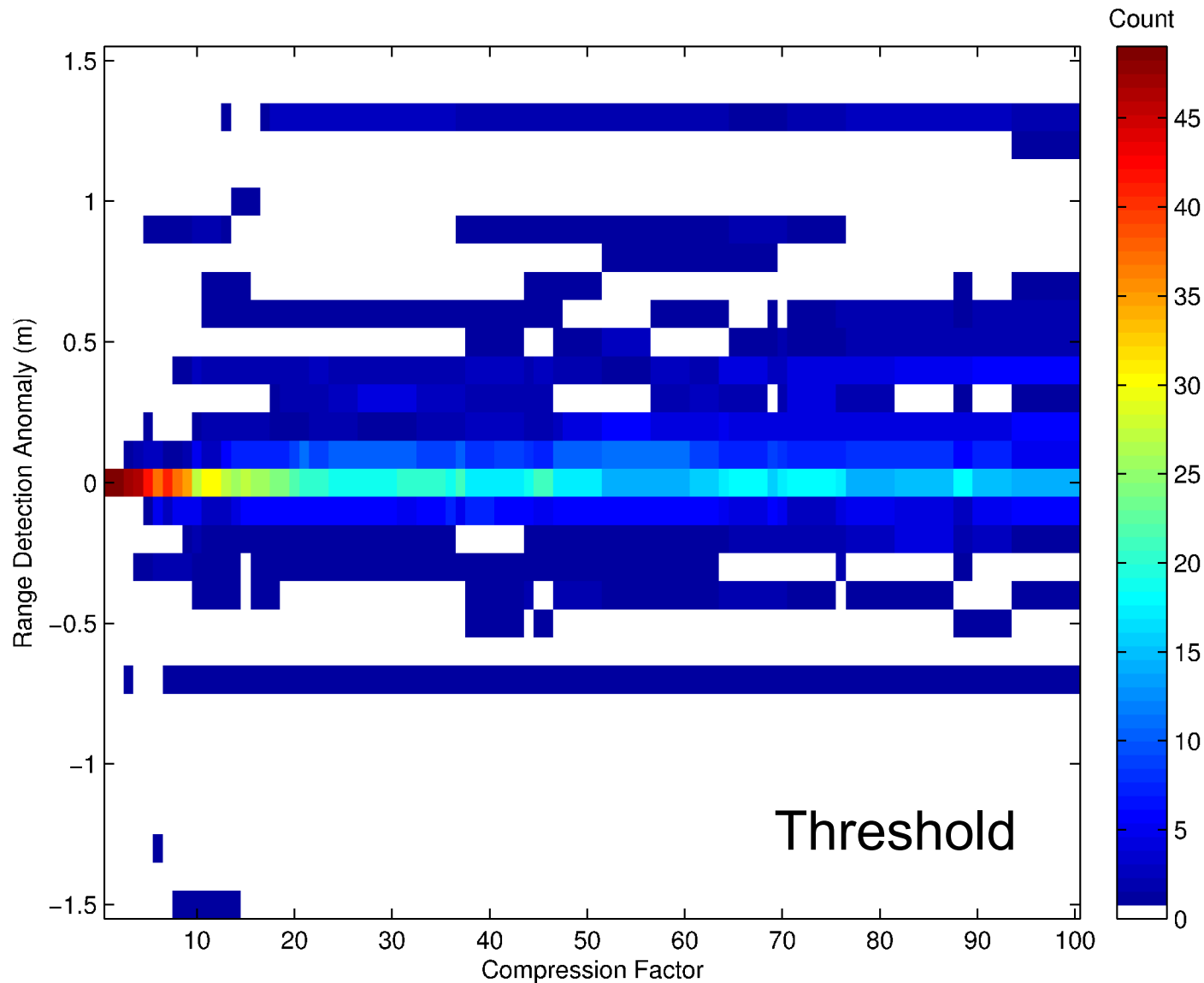
Mean Anomaly



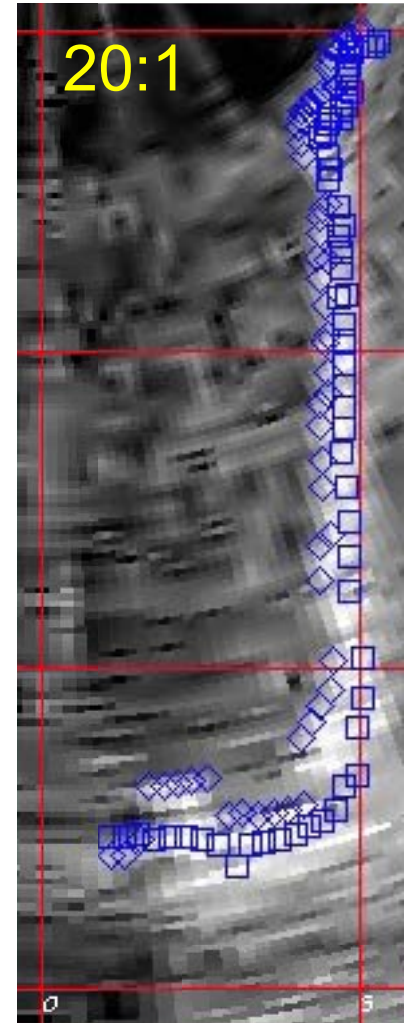
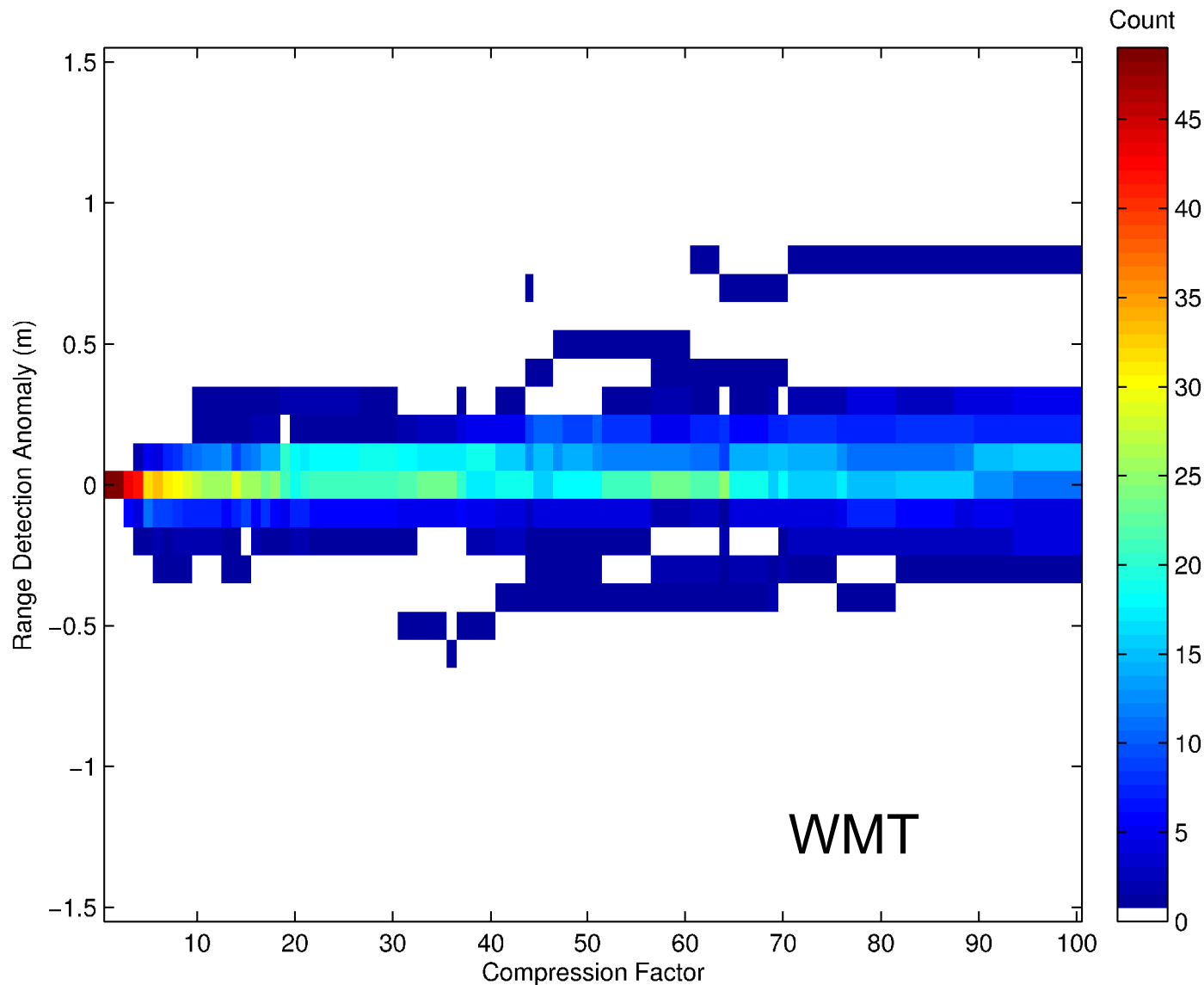
Anomaly Std. Deviation



Wreck Measurement Performance

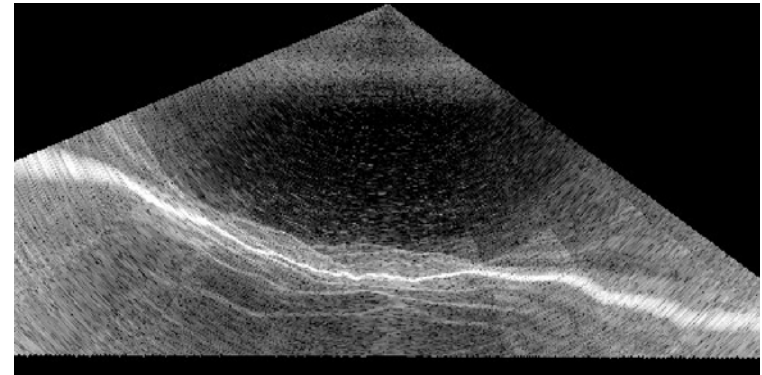


Wreck Measurement Performance



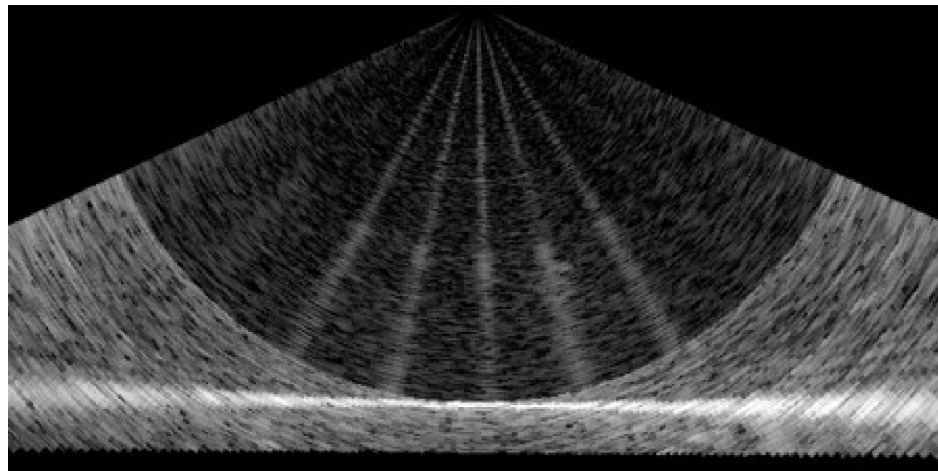
Conclusion

- JPEG 2000 compression easily applicable to MBES water column data
- Lossless:
 - ratios of 1.5:1 achievable
- Lossy:
 - 20:1 seems a good compromise for hydrographic purposes
 - Application specific metrics should be devised
- Compression enables discovery



Take Home Message?

- Lossy compression applied in real-time would allow for continuous WC recording in shallow water
 - Help fulfill hydrographic “detection” requirements
 - Provide invaluable contextual information for data cleaning



Acknowledgements

- ArcticNet NCE
- Sponsors of the OMG
- Officers and Crew of CCGS Otter Bay
- Robert Courtney, GSC (Atlantic)

Questions?

Ocean Mapping Group

University of New Brunswick
CANADA

