

Integrating Topographic and Hydrographic Surveys

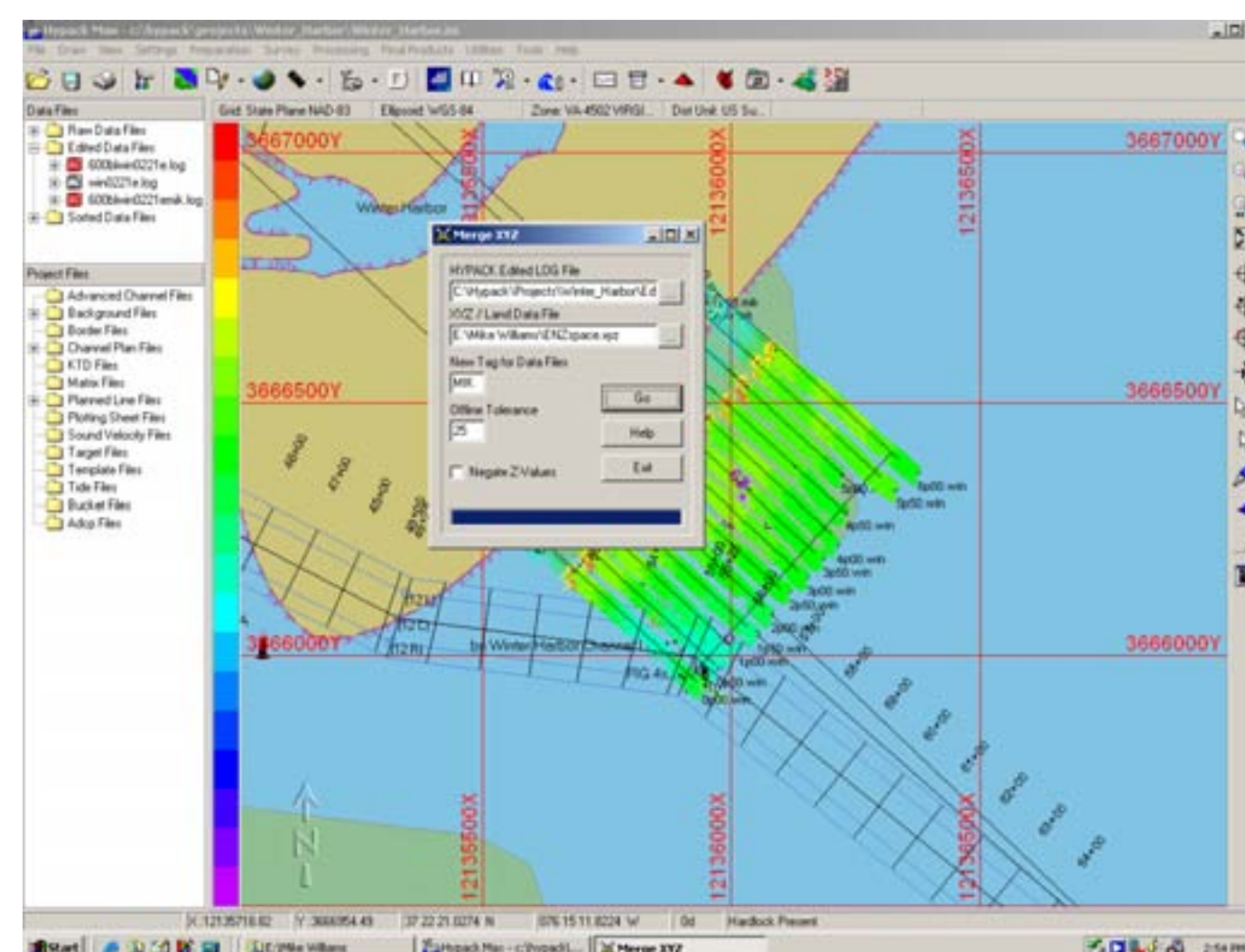


The boat coming in on a cross-section meeting up with the Topo
 Topo: Trimble RTK 5700 unit
 Hydro: HYPACK software for the Hydro
 GDPS and Odom CV3 Depth Recorder on board

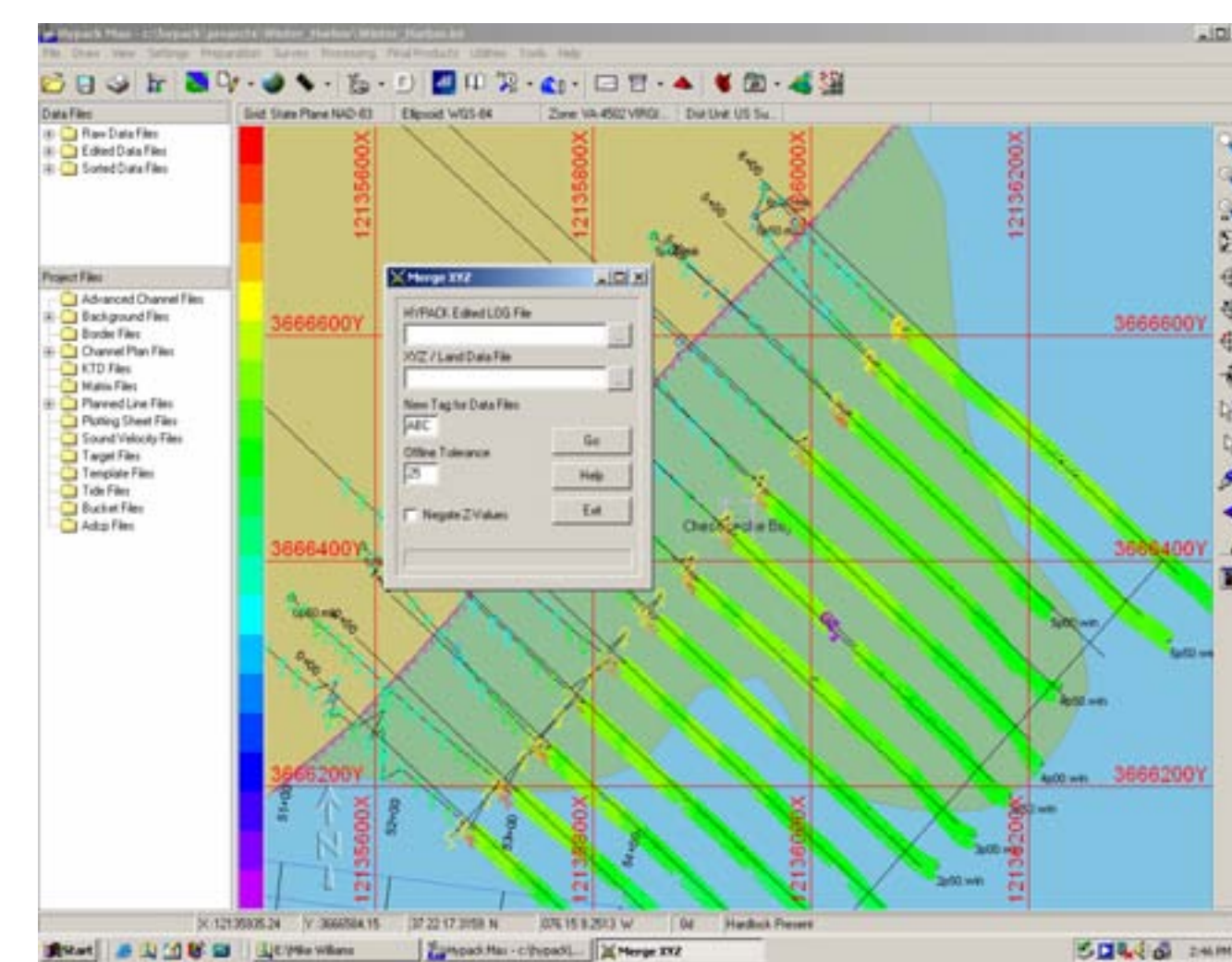
The boat finishing the cross-section and the Topo continuing the cross-section



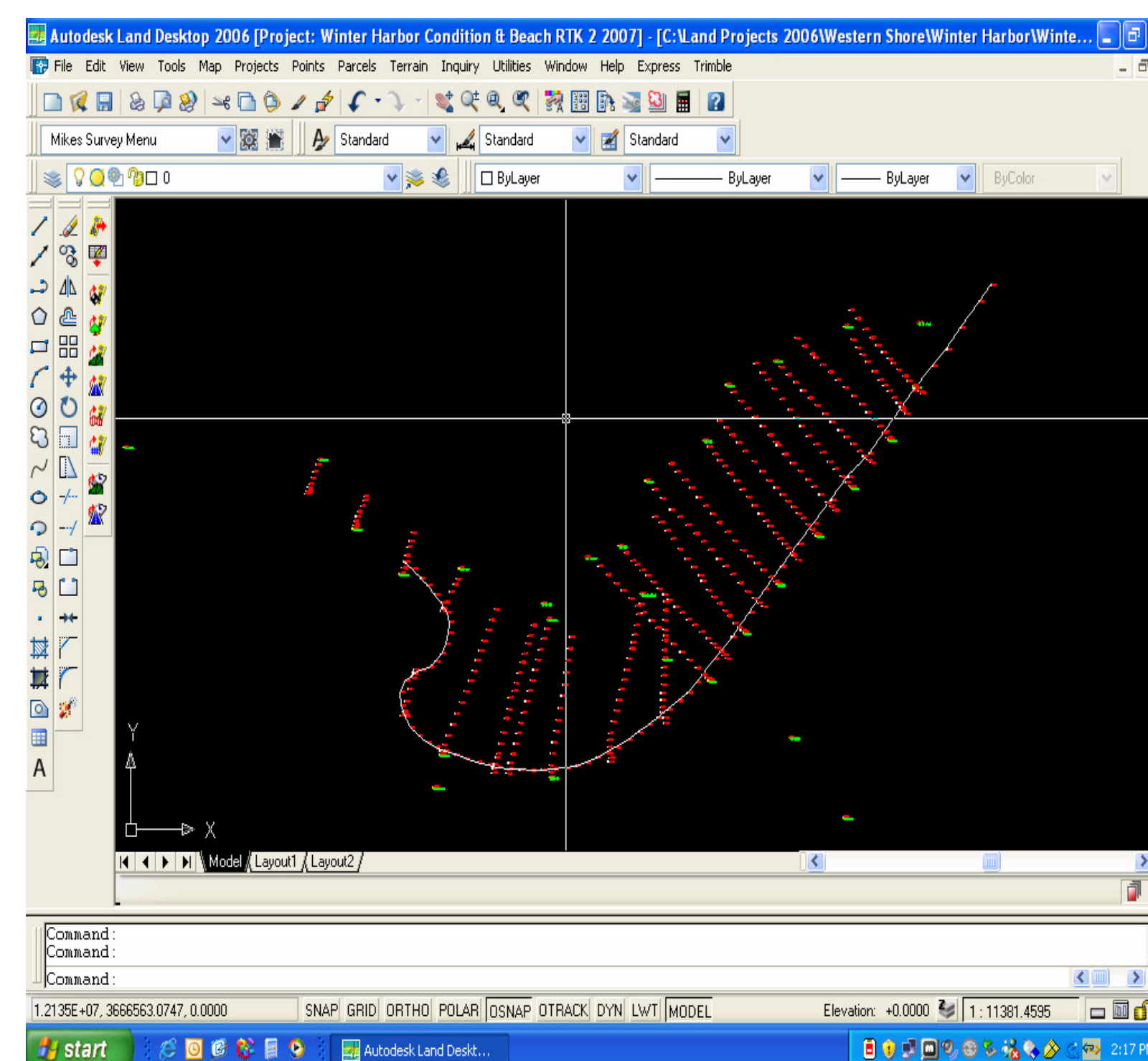
Winter Harbor Condition Survey
 Feb 2007
 Merging of Topo and Hydro Data
 HYPACK's Merge XYZ Feature
 Space Delimited XYZ



Winter Harbor Condition Survey
 Feb 2007
 Merging of Topo Data and Hydro Data
 HYPACK's Merge XYZ Feature



Winter Harbor Condition Survey
 Feb 2007
 NAD 83, MLLW 1960 to 78 Tidal Epoch
 Trimble RTK 5700 with TSCe Data Collector
 Topo Data downloaded and processed



Author Info
 Mike Williams
 Surveying Technician Team Leader
 US Army Corps of Engineers, Norfolk District
 Norfolk, VA

Bio
 I have worked in survey with the Corps of Engineers for sixteen and a half years, and Team Leader for about eight years. Working on dredging surveys, upland and overboard placement sites, beach replenishment, beautification projects, shoreline protection and oyster restoration projects.

Contact Info:
 928 Hugo Street
 Norfolk, VA 23513
 757-201-7247 (fax)
 757-672-1279 (cell)
Michael.A.Williams@usace.army.mil